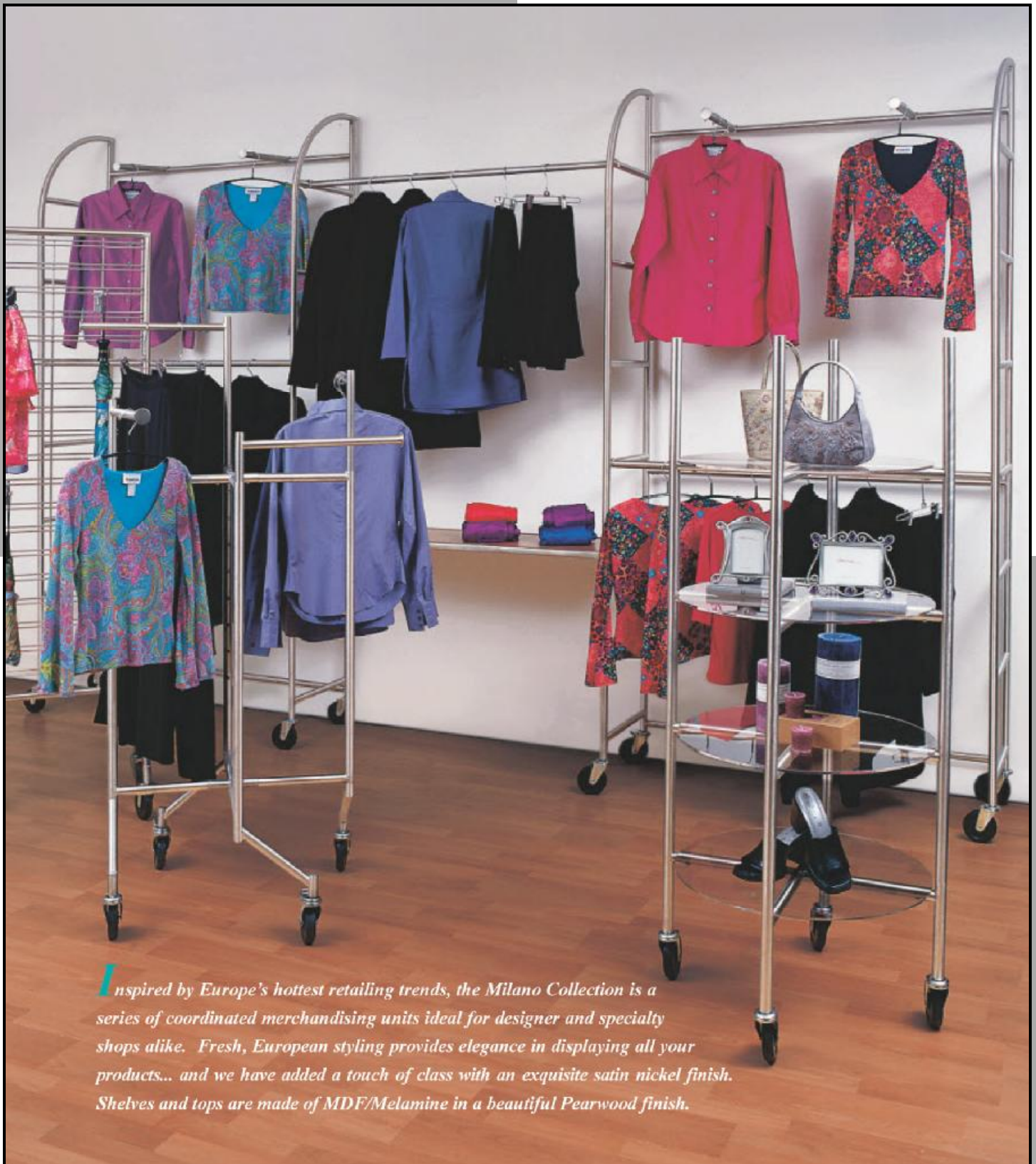


# MILANO WALL SYSTEM

SATIN CHROME



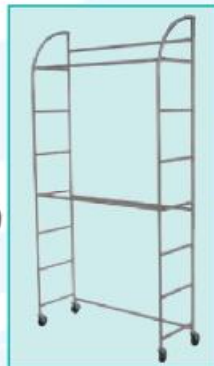
*Inspired by Europe's hottest retailing trends, the Milano Collection is a series of coordinated merchandising units ideal for designer and specialty shops alike. Fresh, European styling provides elegance in displaying all your products... and we have added a touch of class with an exquisite satin nickel finish. Shelves and tops are made of MDF/Melamine in a beautiful Pearwood finish.*



**MN306SN-P**

**Rolling Wall Merchandiser**

- Ideal for folded and hanging merchandise along the perimeter
- 48" L x 17" D x 96" H with welded side panels
- Elegant 1" round tubing with satin nickel finish
- (2) moveable hangrails 48" L x 1" diameter steel tubing with satin nickel finish
- Shown with optional MDF/Melamine shelves - 48" x 14 1/4" x 3/4" thick with Pearwood finish and 12" faceout
- (4) 4" diameter industrial casters (2 locking)
- Shipped KD (UPS-able)



**MNHR48SN**

**48" Hangrail for Rolling Wall Merchandiser**



**MN47SN-P**

**Shelf for Rolling Wall Merchandiser**

- Designed to fit over horizontal bars on end panels of the Rolling Merchandiser
- 48" x 14 1/4" x 3/4" thick MDF/Melamine shelves in Pearwood finish
- Front and back edges reinforced with steel channels and mounting brackets with satin nickel finish
- Minimum order: (2) shelves
- Shipped KD (UPS-able)

**MN47FRSN**

**Shelf Frame Only (Customer Provides Shelf)**



**MN12SN-P**

**12" Faceout for Rolling Wall Merchandiser**

- Attaches to the spanner bars (in the back) for more display options
- 12" long, 1" round with 1 1/2" circular stop with satin nickel steel finish



**AJC/SN**

**Large Joining Clip for Rolling Wall Merchandiser**

- Allows you to join two units



Note: The above items are accessories that work specifically with MN306SN-P (Rolling Wall)



### MN303SN

#### Snap-Together 4-Way

- 4-way visibility - snaps together - No tools necessary!
- (4) 16" display arms (1" round) with 1 1/2" circular stops
- Arms adjustable 42"H to 66"H (every 3")
- Elegant 1" round tubing with satin nickel finish
- (4) 4" diameter industrial casters (2 locking)
- Shipped KD (UPS-able)



### MN301SN-P

#### Fold-Away Display Table

- Large capacity top that comes off base in one piece
- Table that folds away quickly for easy storage
- 60"L x 33"W x 1/4" thick MDF/Melamine top in Pearwood finish
- 30" high off floor (overall)
- Elegant 1" round tubing with satin nickel finish
- (4) 4" diameter industrial





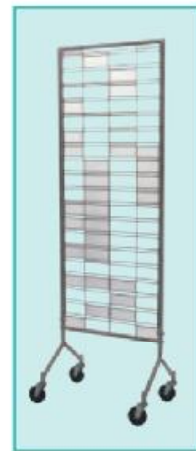
**MN305SN-CI**

**Rolling Étagère**

- Beautiful accent to any display scheme
- 60"H x 24" diameter
- (4) clear 1/4" acrylic shelves (22 1/2" diameter)
- Elegant 1" round tubing with satin nickel finish
- (4) 4" diameter industrial casters (2 locking)
- Shipped KD (UPS-able)

**MN305SN**

**Frame Only**



**MN304SN**

**Rolling Accessory Panel**

- Place it exactly where you need it - generates tie-in sales!
- 72"H x 24"W slat/grid panel with satin nickel finish
- Accepts all slat and grid display accessories
- Elegant 1" round tubing with satin nickel finish
- (4) 4" diameter industrial casters (2 locking)
- Shipped KD (UPS-able)

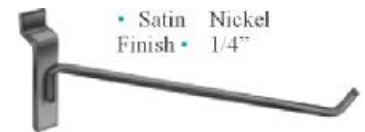
**3" Garment**



**SW/FRSN**

- Satin Nickel

**Display Hooks for Slatwall and Slat**



- Satin Nickel Finish • 1/4"

**SN/**

**SN/**

**SN/H10**

**SN/H10**

10"

**SN/H12**

12"